



**Parco Pineta**  
Il cuore verde della Lombardia

# IL MINI DIORAMA DEL CINGHIALE



## COSA OCCORRE?

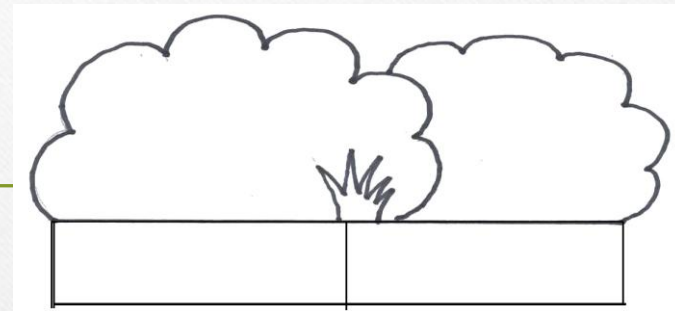
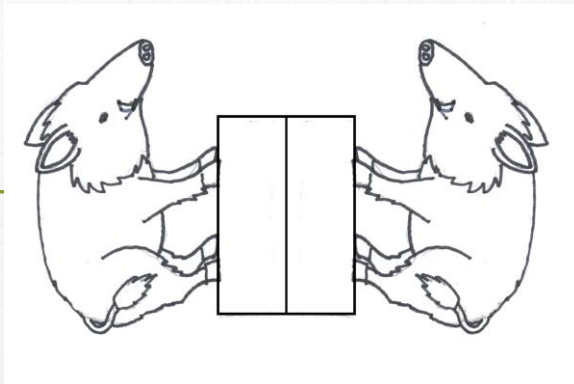
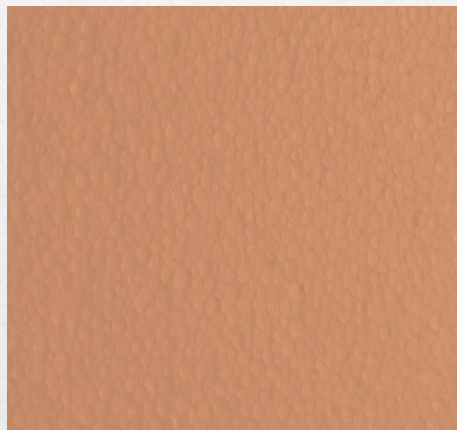
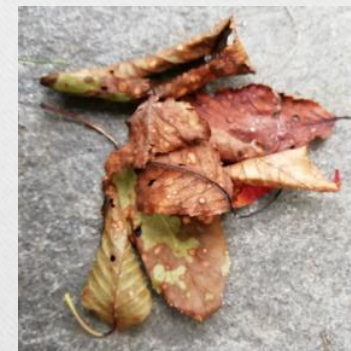
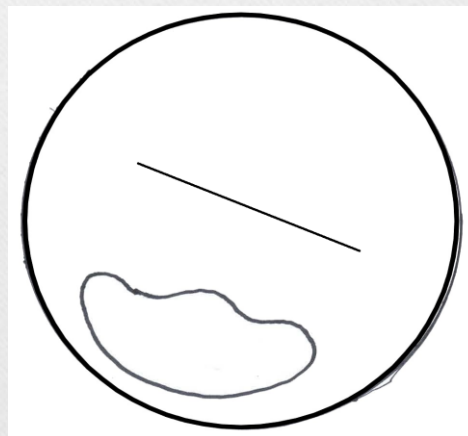


FIGURE DA COLORARE: CINGHIALE, SFONDO E BASE

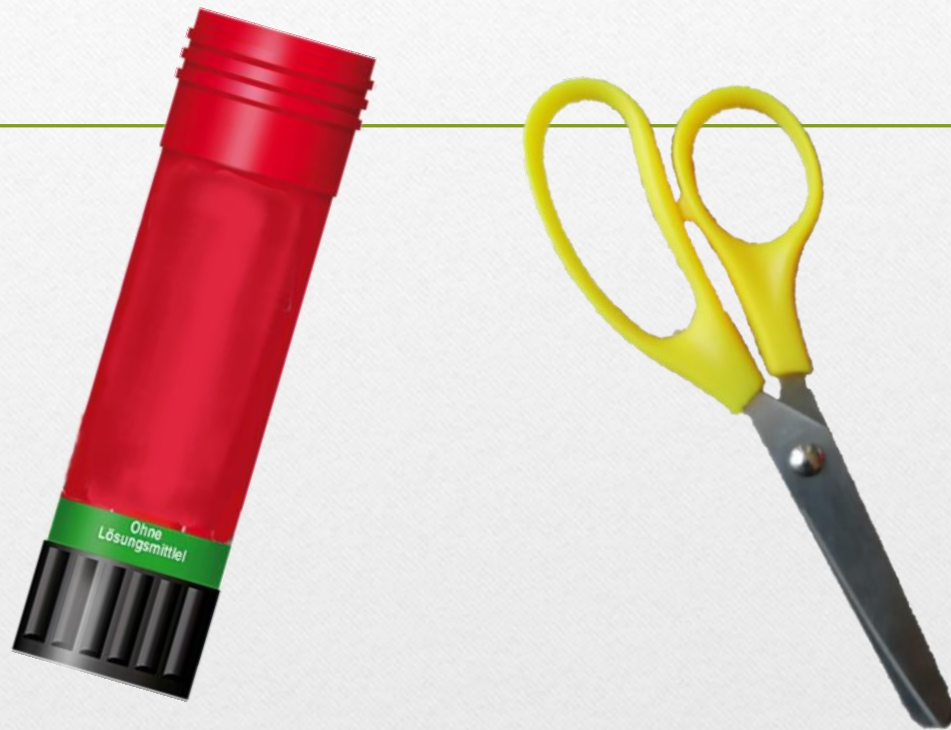


CARTONE 12x12 cm  
(facoltativo)



FOGLIE SECCHIE

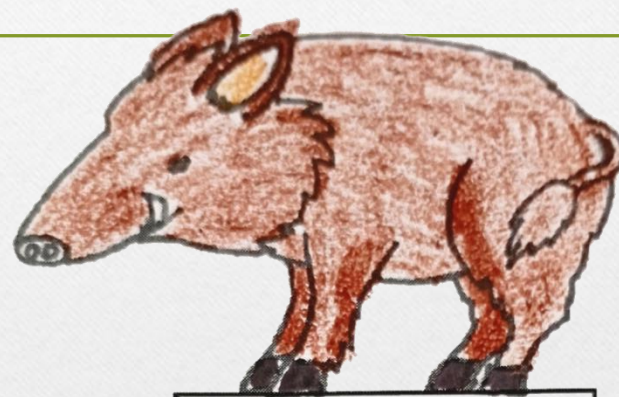
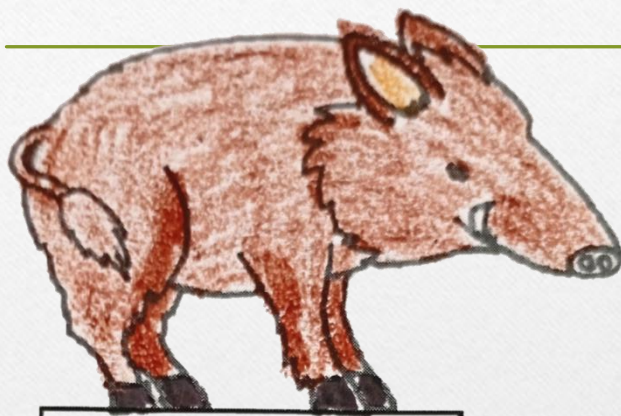
COSA OCCORRE?



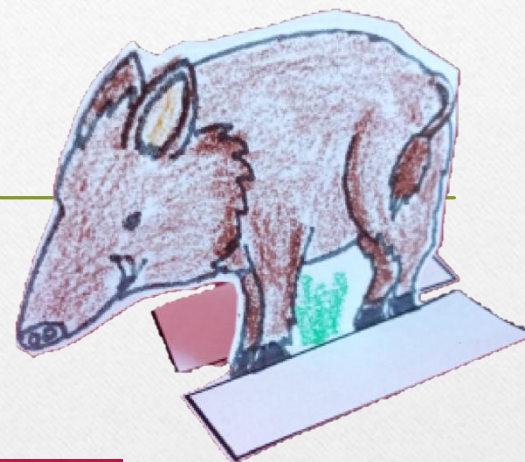
COLLA STICK, E FORBICI

IL MINI DIORAMA DEL CINGHIALE

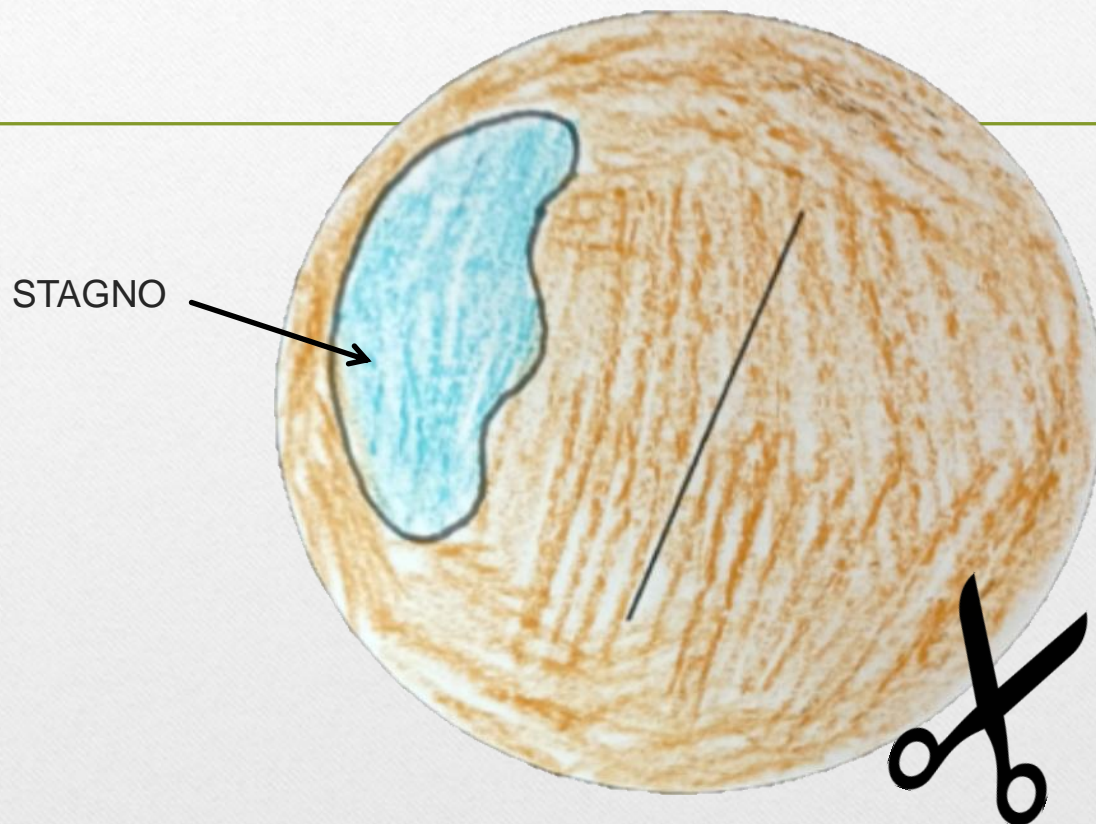
# COLORA LE SAGOME DEL CINGHIALE E TAGLIALE



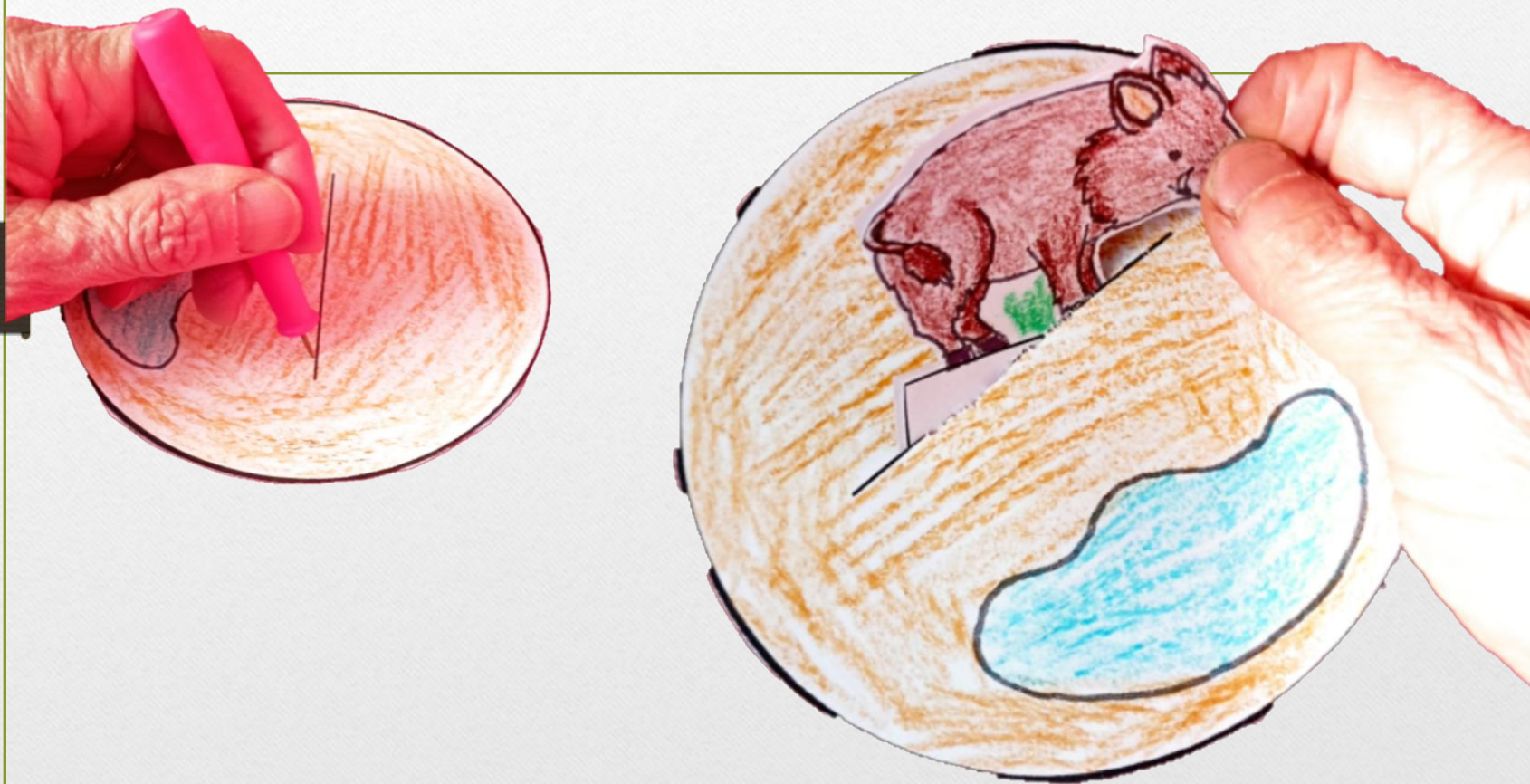
# PIEGA LE LINGUETTE E INCOLLA LE DUE META' CINGHIALE



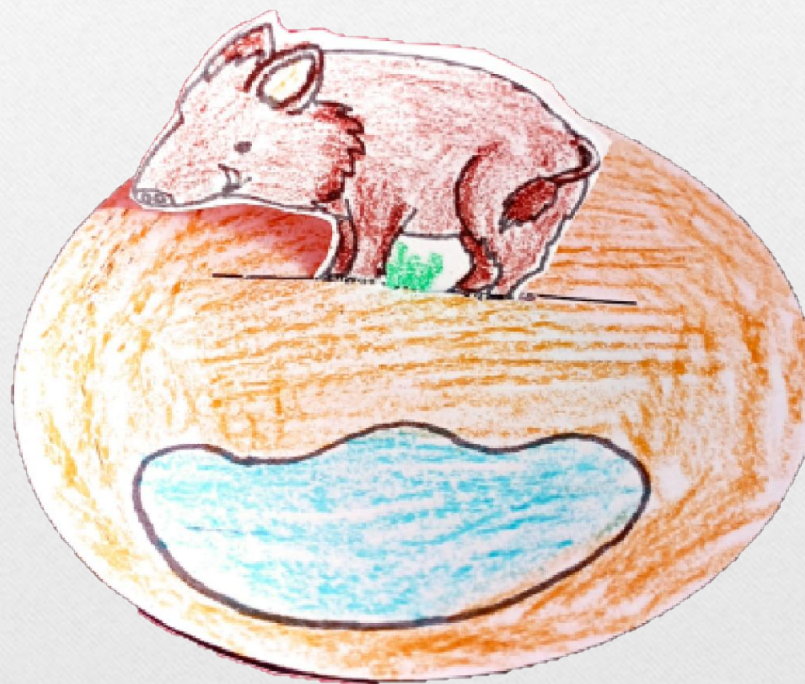
## COLORA LO SFONDO E TAGLIALO



TAGLIA LUNGO LA LINEA E INSERISCI LE  
LINGUETTE DEL CINGHIALE NEL FORO



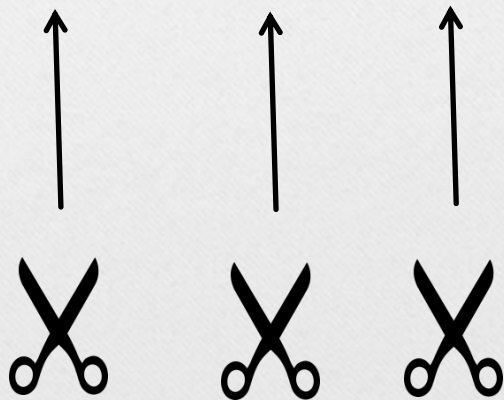
INCOLLA LE LINGUETTE



IL MINI DIORAMA DEL CINGHIALE



COLORA E TAGLIA LO SFONDO  
INCOLLALO SULLA BASE



IL MINI DIORAMA DEL CINGHIALE

# INCOLLA FOGLIE SECCHHE E TERRA

PER UNA MAGGIORE ROBUSTEZZA INCOLLA IL LAVORO SU UN CARTONCINO





**Parco Pineta**  
Il cuore verde della Lombardia

# IL MINI DIORAMA DEL CINGHIALE

FINE

IDEAZIONE E REALIZZAZIONE:  
Paola Casale

